

TONGA® A 22



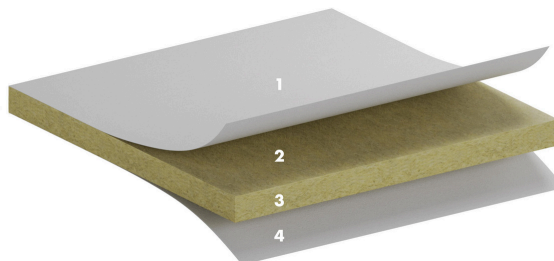
Tonga® A 22 ceiling offers an excellent sound absorption, fire resistance and benefits of 320 combinations of formats and colors. Ideals for all types of room.





PANEL DESCRIPTION

1:	Decorative glass fiber veil in white, EuroColors or EuroDesign
2:	High density stone wool panel, 22 mm thick
3:	A edges
4:	Natural glass veil on reverse side



TYPE OF APPLICATION

- Additional areas
- Education
- Office
- Healthcare

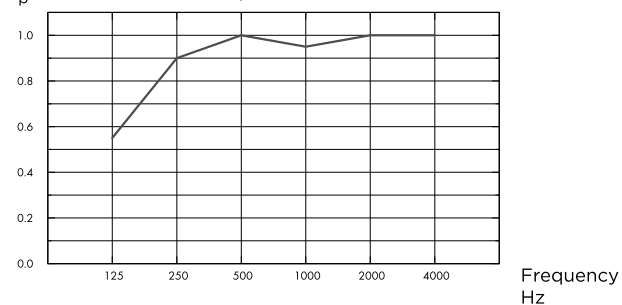


ACOUSTICS

Sound Absorption

Test results according to EN ISO 354. Classification according to EN ISO 11654, and the single value rating for Noise Reduction Coefficient, NRC, according to ASTM C 423.

α_p , Practical sound absorption coefficient



— Eurocoustic Tonga® A 22, 200 mm o.d.s.
o.d.s = overall depth of system

THK mm	o.d.s. mm	α_p , Practical sound absorption coefficient						α_w	Sound absorption class
		125 Hz	250 Hz	500 Hz	1000 Hz	2000 Hz	4000 Hz		
22	200	0.55	0.90	1.00	0.95	1.00	1.00	1.00	A

THK mm	o.d.s. mm	NRC
22	200	1.00



VISUAL APPEARANCE

Property	White 09
Light Reflectance (LRV%)	87%
Whiteness (L*)	94%
Gloss (85°)	1.2



FIRE REACTION

Standard	White 09, EuroColors, EuroDesign	Silver M5
EN 13501-1	Euroclass A1	Euroclass A2-s1,d0



FIRE RESISTANCE

See respective classification reports for detailed information on installation and suspension system requirements.

Standard	Classification	Size	Load-bearing structures	Additional insulation
EN 13501-2	REI 30	600x600	Concrete, Steel	-
EN 13501-2	REI 30	600x600	Concrete, Steel, Timber	160 mm Eurolène® 603
NBN 713-020	SF 30	600 to 1200 x 600	Concrete, Steel	-
NBN 713-020	SF 30	600 to 1200 x 600	Concrete, Steel, Timber	160 mm Eurolène® 603
NBN 713-020	SF 30	1200 to 2400 x 600	Concrete, Steel	-



HUMIDITY RESISTANCE

100% flat irrespective of the Relative Humidity.



INDOOR AIR QUALITY

Certificate / Label	
French VOC	A+
Eurofins	Indoor Air Comfort® Gold



MATERIAL HEALTH

C2C Certified Material Health Certificate™	This product has received a C2C Certified Material Health Certificate™ at the Bronze level (standard version 4.0). The C2C Certified Material Health Certificate™ is a verification of the health and safety of a product's composition using the Material Health requirements of the Cradle-to-Cradle Certified Product Standard.
EUCEB	Eurocoustic panels are manufactured using mineral wool certified by the European Certification Board for mineral wool products (EUCEB), which independently confirms that mineral wool is produced in conformity with the Note Q of European Regulation (EC) No 1272/2008 and therefore classification as a carcinogen does not apply.
REACH	Eurocoustic products comply with the REACH regulation of the European Chemicals Agency and therefore do not contain any Substances of Very High Concern (SVHC) with potential negative impacts on human health or the environment above 100ppm.



CARBON FOOTPRINT

Life cycle stages A1 to C4 of the EPD, in compliance with ISO 14025 / EN 15804.

	kg CO ₂ equiv/m ²
Tonga A 22	4.04



CIRCULARITY

Minimum recycled content	23%
Recyclability	Fully recyclable



CRADLE TO CRADLE CERTIFIED®

This product is Cradle to Cradle Certified® at Bronze level (version 4.0).



CLEANABILITY

The ceiling surface does not retain dust, which makes the panels easier to clean. The ceiling can be cleaned using a light brush or a vacuum cleaner. This type of cleaning will help extend the service life of the ceilings.



INSTALLATION

- You are advised to ensure that air can circulate between the rooms and the plenum to balance the temperature and pressures on each side of the ceiling.
- Tiles can be cut with a craft knife without generating any noise or dust.
- The direction in which the panels should be installed is indicated on the back of the panels.
- Contact us if any mineral wool is to be laid in the plenum.



CE

Eurocoustic ceilings are CE marked according to the European harmonized standard EN13964:2014. CE marked construction products are covered by a Declaration of Performance (DOP) which enables customers and users to easily compare performance of products available on the European market.



PRODUCT RANGE

Tonga® A 22 ceiling packs are shrink-wrapped for protection. Pallets are wrapped in plastic film and must be stored under cover.

Format	600x600	1200x600	1500x600	1720x600	1800x600	2000x600	2400x600	1200x1200
Edge	A	A	A	A	A	A	A	A
White 09	•	•	•	•	•	•	•	•
EuroColors	•	•	•		•	•	•	•
EuroDesign	•	•						
Grids	T15/T24	T15/T24	T15/T24	T15/T24	T15/T24	T15/T24	T15/T24	T15/T24
Panels/pack	24	12	10	10	10	10	6	6
m²/pack	8.64	8.64	9.00	10.22	10.80	12.00	8.64	8.64
Packs/pallet	18	18	20	20	20	20	18	17
Service class	A	A	B	C	B	B	B	B

COLOURS AND DESIGN

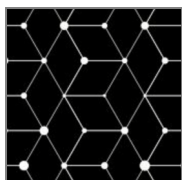
Colours



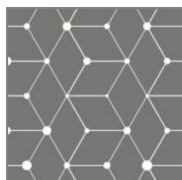
EuroColors

Argile / D1	Calcaire / D2	Craie / D3	Dune / D4	Sable / D5	Terre / D6	Ambre / G1
Emeraud / G2	Grenat / G3	Jade / G4	Rubis / G5	Saphir / G6	Soufre / G7	Topaze / G8
Turquoise / G9	Aluminium / M1	Chrome / M2	Granite / M3	Plomb / M4	Silver / M5	Zinc / M6
Banquise / P1	Crépuscule / P2	Givre / P3	Glacier / P4	Iceberg / P5	Rosée / P6	Céladon / T1
Cuivre / T2	Ocre / T3	Outremer / T4	Sienne / T5	Silex / T6	Ardoise / V1	Basalte / V2
Cobalt / V3	Fer / V4	Lave / V5	Météorite / V6	Noir / V7		

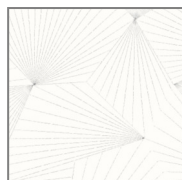
EuroDesign



Cubes Noir | C1



Cubes Zinc | C2



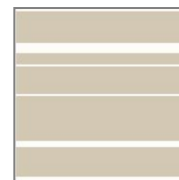
Ombelle Ardoise | O1



Ombelle Dune | O2



Bayadère Aluminium
| B1



Bayadère Calcaire |
B2