

LÜMEN PERFORMANSI

LUMEN PERFORMANCE



Light efficiency:



Output: 1907 lm

Light quality:



Peak: 662 cd

Color temperature:



Power: 22,2 W

PF: 0,90

12 PLANES

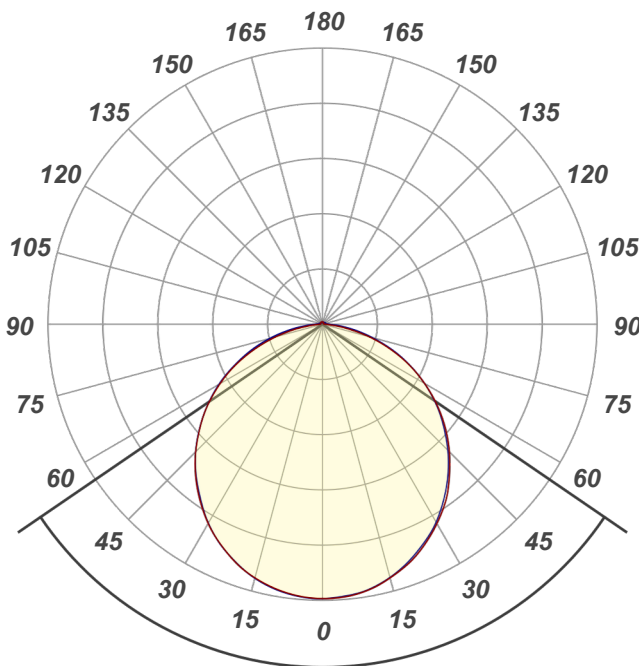


Product name:

**PROSISTA ARMATÜR -
25.12.2025**

Date and time:

25.12.2025 16:56:01



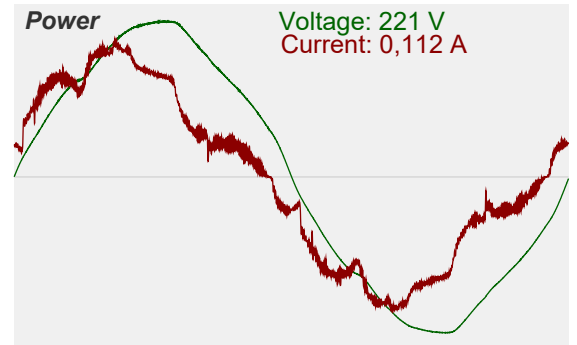
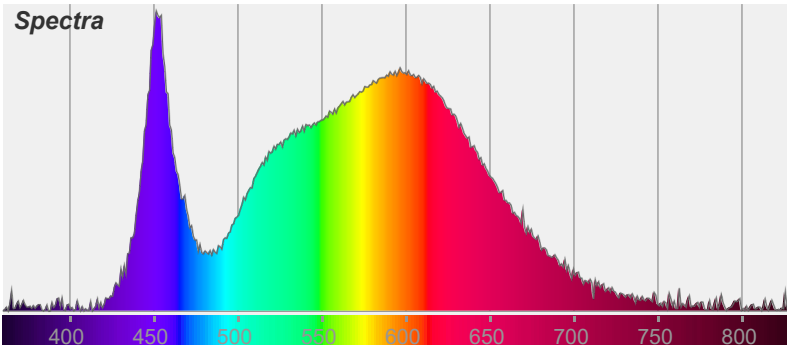
Beam angle

111,6°

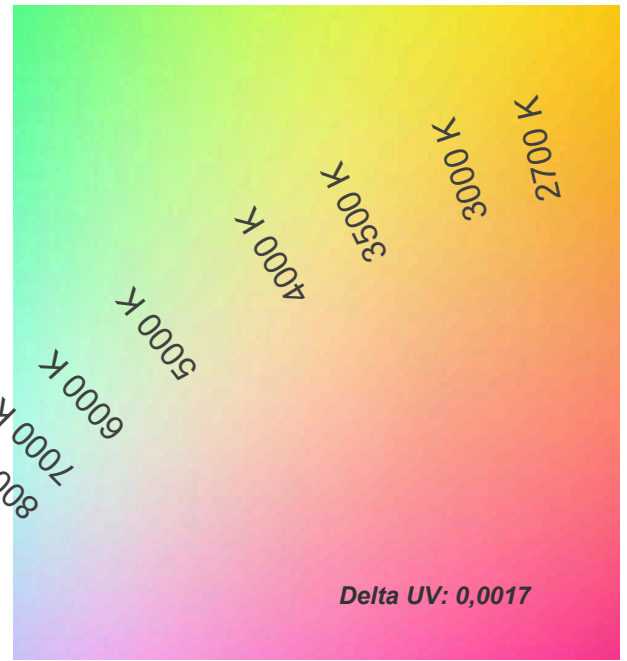
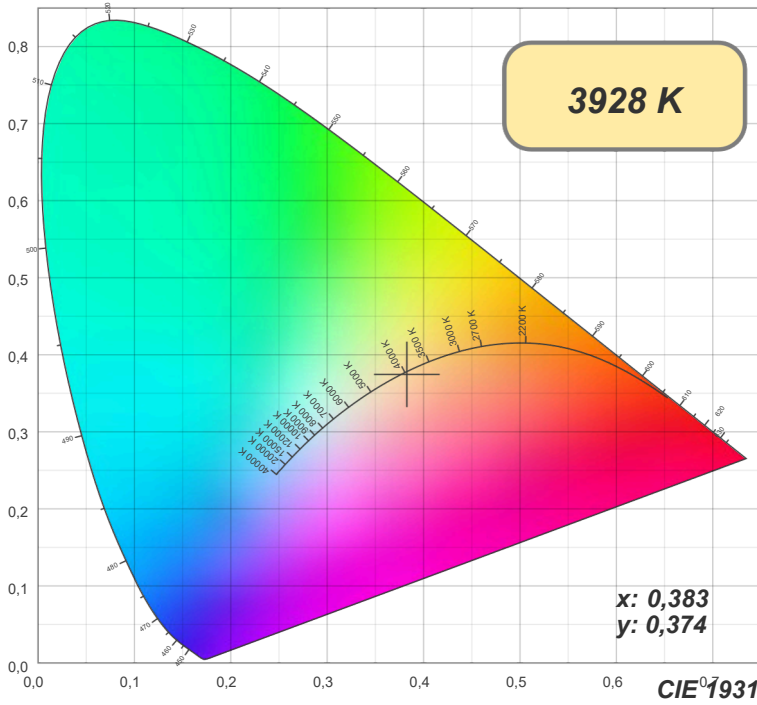
Color



CIE1931
x: 0,383
y: 0,374

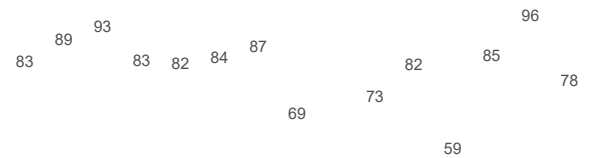


Light measurement was created using the Viso Systems - Light Inspector. www.visosystems.com



TM30: 83,6

CRI: 83,8 (R1-R8)



19

C1 C2 C3 C4 C5 C6 C7 C8 C9 C10 C11 C12 C13 C14 C15 C16

R1 R2 R3 R4 R5 R6 R7 R8 R9 R10 R11 R12 R13 R14 R15

CRI R values, only R1-R8 are used to calculate final CRI value

R1	R2	R3	R4	R5	R6	R7	R8	R9	R10	R11	R12	R13	R14	R15
83,08	89,18	92,78	83,38	82,32	84,10	87,18	68,52	18,69	73,22	82,06	59,03	84,62	95,83	77,81

TM30 C values, 16 binned values out of total of 99 C values

C1	C2	C3	C4	C5	C6	C7	C8	C9	C10	C11	C12	C13	C14	C15	C16
81,75	83,96	77,02	85,94	88,26	92,99	91,98	89,84	86,81	75,65	74,90	80,10	86,10	87,11	81,81	78,93

CQS Q values

Q1	Q2	Q3	Q4	Q5	Q6	Q7	Q8	Q9	Q10	Q11	Q12	Q13	Q14	Q15
83,52	98,41	75,41	73,23	80,26	83,00	84,48	88,46	96,51	86,38	83,35	82,86	83,50	74,59	77,74

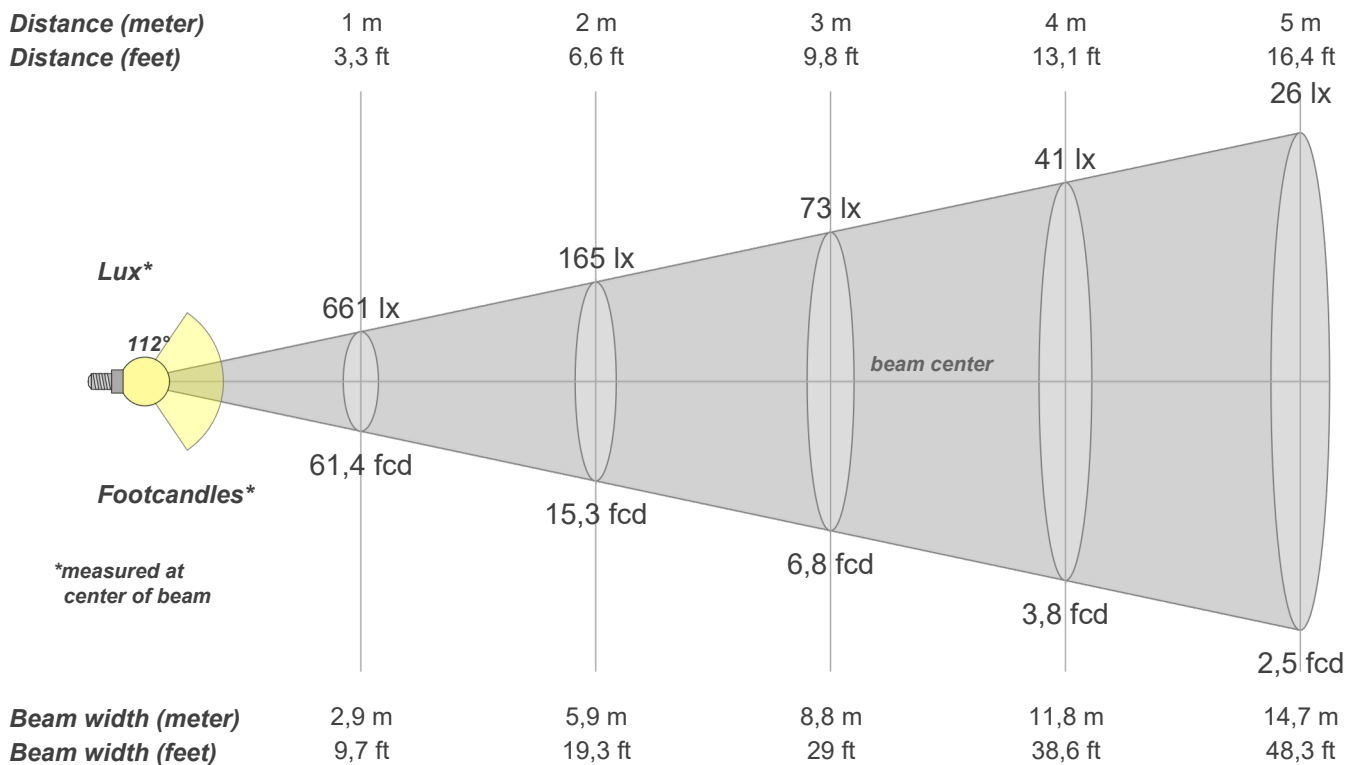
CQS: 82,1



Q1 Q2 Q3 Q4 Q5 Q6 Q7 Q8 Q9 Q10 Q11 Q12 Q13 Q14 Q15

Color parameters

CCT	CRI	CRI R9	TM30 Rf	TM30 Rg	CQS	x	y	u	v	Duv
3928 K	83,8	18,7	83,6	97,2	82,1	0,4	0,4	0,2	0,3	-0,0017



Intensities in 0° c-plane

0°	5°	10°	15°	20°	25°	30°	35°	40°	45°	50°	55°	60°	65°	70°	75°	80°	85°	90°	95°
661	659	650	633	613	586	555	521	479	435	389	339	286	232	174	117	63	22	7	3
100%	100%	98%	96%	93%	89%	84%	79%	72%	66%	59%	51%	43%	35%	26%	18%	9%	3%	1%	1%

Intensities in 90° c-plane

0°	5°	10°	15°	20°	25°	30°	35°	40°	45°	50°	55°	60°	65°	70°	75°	80°	85°	90°	95°
661	657	648	631	609	581	550	513	473	430	383	336	285	233	180	126	79	41	18	11
100%	99%	98%	96%	92%	88%	83%	78%	72%	65%	58%	51%	43%	35%	27%	19%	12%	6%	3%	2%

Intensities in 180° c-plane

0°	5°	10°	15°	20°	25°	30°	35°	40°	45°	50°	55°	60°	65°	70°	75°	80°	85°	90°	95°
661	657	648	632	612	585	554	518	478	434	387	339	286	232	174	117	65	24	6	5
100%	99%	98%	96%	93%	88%	84%	78%	72%	66%	59%	51%	43%	35%	26%	18%	10%	4%	1%	1%

Intensities in 270° c-plane

0°	5°	10°	15°	20°	25°	30°	35°	40°	45°	50°	55°	60°	65°	70°	75°	80°	85°	90°	95°
661	658	649	633	611	585	553	515	476	434	388	340	290	236	184	132	83	41	17	9
100%	100%	98%	96%	93%	89%	84%	78%	72%	66%	59%	51%	44%	36%	28%	20%	13%	6%	3%	1%

Beam angle 50%	Field angle 10%	Cutoff angle 2,5%	Intensity ratio in 120° cone	Intensity ratio in 90° cone
111,6°	161,7°	177,5°	77,1%	52,5%